

# AVENIR - PARCEL B TOWNHOMES

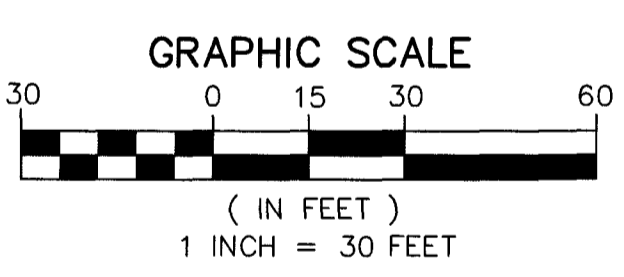
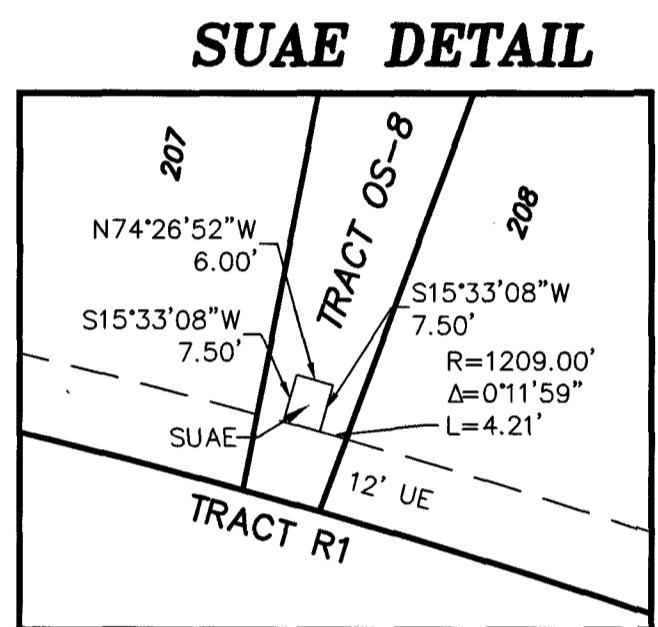
BEING A REPLAT OF A PORTION OF PARCEL A-3, AVENIR, AS RECORDED IN PLAT BOOK 127 PAGE 85, OF THE PUBLIC RECORDS OF PALM BEACH COUNTY, FLORIDA LYING IN SECTION 15, TOWNSHIP 42 SOUTH, RANGE 41 EAST, CITY OF PALM BEACH GARDENS, PALM BEACH COUNTY, FLORIDA.

THIS INSTRUMENT PREPARED BY  
RONNIE L. FURNISS  
OF  
**CAULFIELD and WHEELER, INC.**  
SURVEYORS - ENGINEERS - PLANNERS  
7900 GLADES ROAD, SUITE 100  
BOCA RATON, FLORIDA 33434 - (561)392-1991  
CERTIFICATE OF AUTHORIZATION NO. LB3591  
JULY 2024

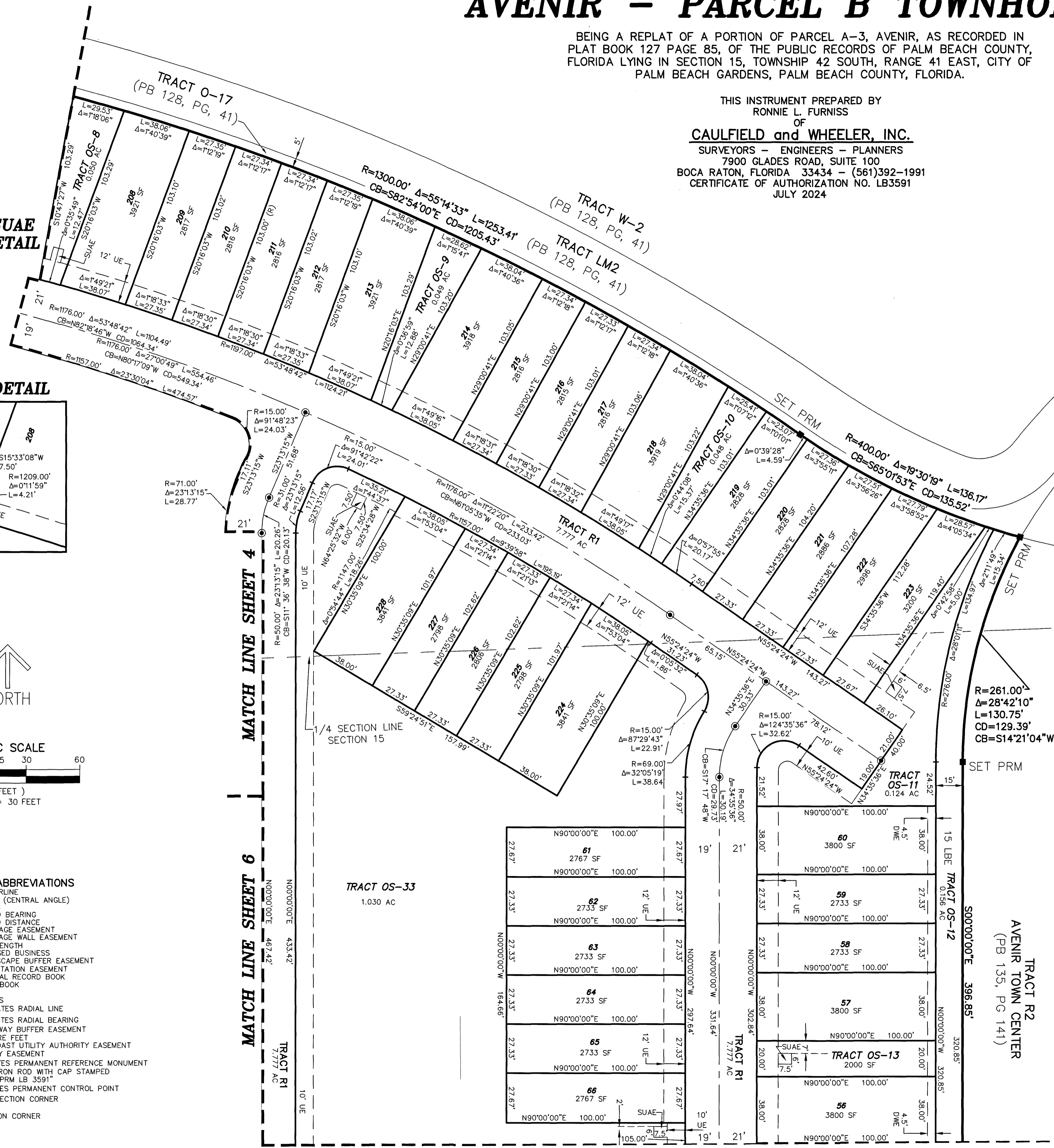
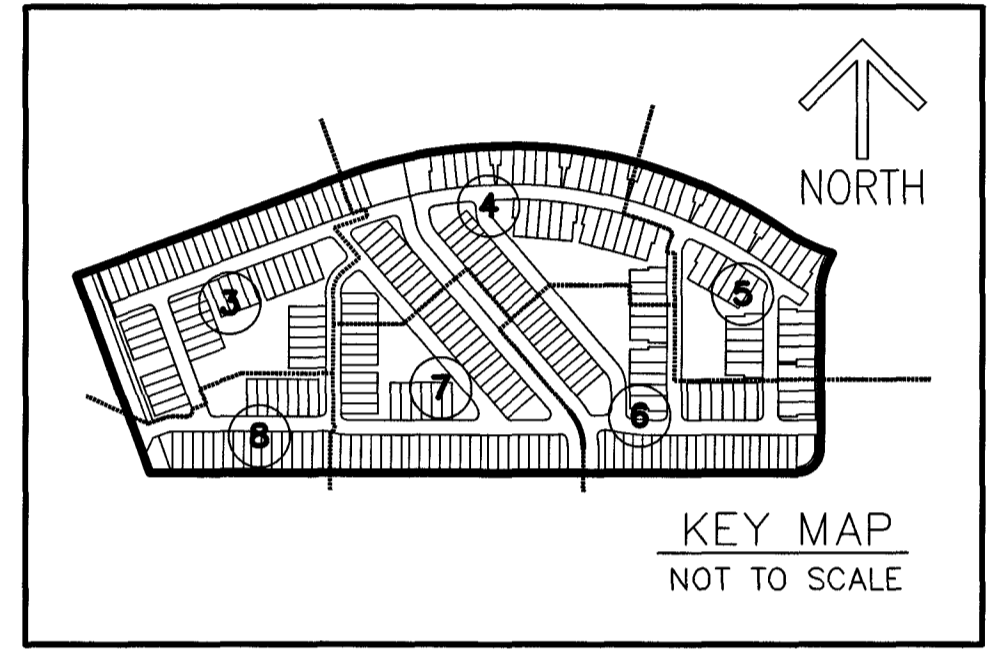
160

SHEET 5 OF 8

FOR SUAE  
SEE DETAIL



- LEGEND/ABBREVIATIONS**
- e - CENTERLINE
  - Δ - DELTA (CENTRAL ANGLE)
  - ADRES - ADDRESS
  - CB - CHORD BEARING
  - CD - CHORD DISTANCE
  - DE - DRAINAGE EASEMENT
  - DWE - DRAINAGE WALL EASEMENT
  - L - ARC LENGTH
  - LB - LICENSED BUSINESS
  - LBE - LANDSCAPE BUFFER EASEMENT
  - LSE - LIFT STATION EASEMENT
  - O.R.B. - OFFICIAL RECORD BOOK
  - PB - PLAT BOOK
  - PG - PAGE
  - R - RADIUS
  - (R) - INDICATES RADIAL LINE
  - RB - INDICATES RADIAL BEARING
  - RBE - ROADWAY BUFFER EASEMENT
  - SF - SQUARE FEET
  - SUAE - SEACOAST UTILITY AUTHORITY EASEMENT
  - UE - UTILITY EASEMENT
  - PRM - DENOTES PERMANENT REFERENCE MONUMENT
  - 5/8" IRON ROD WITH CAP STAMPED "C&W PRM LB 3591"
  - - DENOTES PERMANENT CONTROL POINT
  - ▲ - 1/4 SECTION CORNER
  - ✱ - SECTION CORNER



MATCH LINE SHEET 6